

Crossed Roller Stages ▶ X-Axis and XY-Axis ▶ Aluminum Alloy

Crossed Roller Stages | 40*40

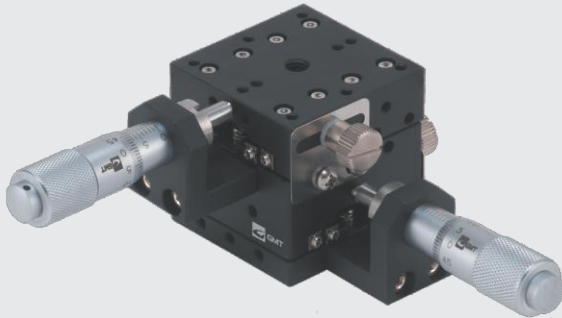
MX40-AC



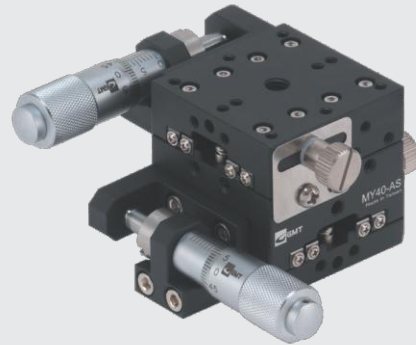
MX40-AS



MY40-AC



MY40-AS



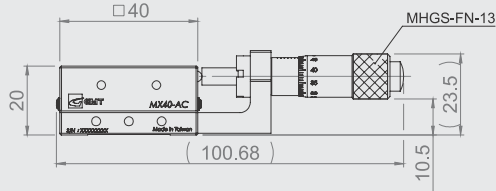
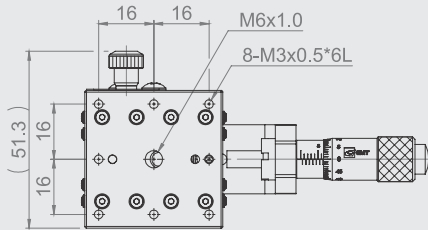
Unit : mm

Model No.	Table Size	Axis	Feed Position	Travel Stroke	Micrometer Minimum Reading (μm)	Straightness Accuracy (μm)	Allowable Loading (kgf)	Weight (kg)	Material	Surface Finish
MX40-AC	40*40	X-axis	Central	± 6.5	10	3	2	0.14	Aluminum alloy	Black anodized
MX40-AS			Side							
MY40-AC		XY-axis	Central							
MY40-AS			Side							

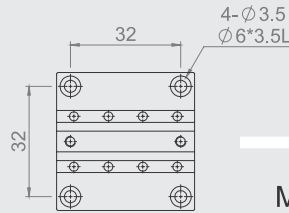
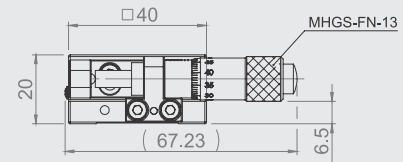
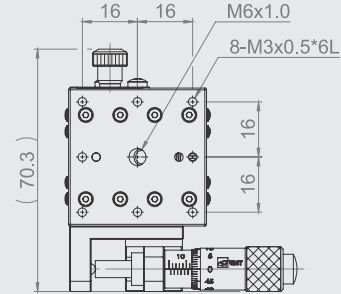
Crossed Roller Stages ► X-Axis and XY-Axis ► Aluminum Alloy

Crossed Roller Stages | 40*40

MX40-AC

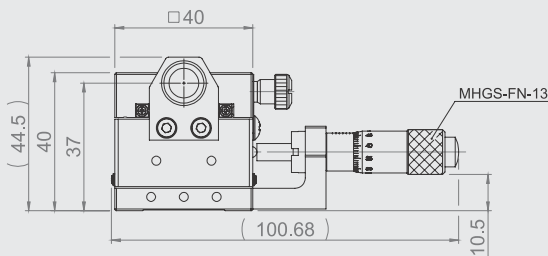
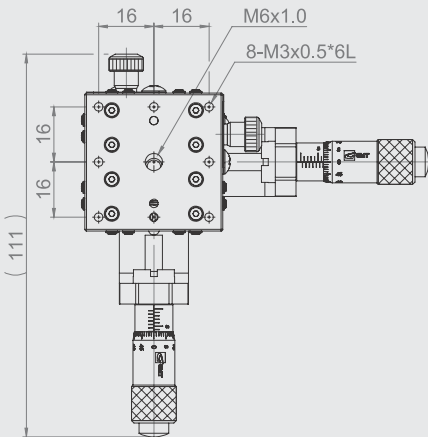


MX40-AS



MX(Y)40-A
Mounting
Dimensions

MY40-AC



MY40-AS

